

## Landscape Character

5.65 National policy requires Councils to protect and enhance valued landscapes as part of conserving and enhancing the natural environment. The District Council has had comprehensive assessment of Landscape Character undertaken. This approach has the benefit of assessing the whole of an area's landscape rather than focusing on particular locations. In Nottinghamshire, the County Council has developed a Landscape Character Assessment process, which the District Council has used to comprehensively assess Newark and Sherwood District's area. This assessment requires that the landscape be broken down into County Character Areas. This work was undertaken for the earlier Nottinghamshire Landscape Guidelines. It places the District in 5 County Character Areas:

- Sherwood
- Mid Nottinghamshire Farmlands
- Trent Washlands
- East Nottinghamshire Sandlands
- South Nottinghamshire Farmlands

5.66 The Landscape Guidelines also identify within the Character Areas a number of Landscape Policy Zones, shown for illustrative purposes in Figure 4. These Zones refer to individual areas of similar character within the Character Areas. The District Council and the County Council have undertaken detailed assessments of condition and sensitivity of the landscape of each Policy Zone. The Zones themselves are split down into individual Landscape Character Parcels. Conservation and Enhancement Aims for each Landscape Policy Zone have been identified. The Zones are categorised as one of the following types of Policy Actions which require a particular approach to:

Action	
Conserve	Actions that encourage the conservation of distinctive features and features in good condition
Conserve and Reinforce	Actions that conserve distinctive features and features in good condition and strengthen and reinforce those features that may be vulnerable
Reinforce	Actions that strengthen or reinforce distinctive features and patterns in the landscape
Conserve and Restore	Actions that encourage the conservation of distinctive features in good condition, whilst restoring elements or areas in poorer

	condition and removing or mitigating detracting features.
Conserve and Create	Actions that conserve distinctive features and features in good condition, whilst creating new features or areas where they have been lost or are in poor condition.
Restore	Actions that encourage the restoration of distinctive features and the removal or mitigation of detracting features.
Restore and Create	Actions that restore distinctive features and the removal of detracting features, whilst creating new features or areas where they have been lost or are in poor condition.

<b>Action</b>	
Reinforce and Create	Actions that strengthen or reinforce distinctive features and patterns in the landscape, whilst creating new features or areas that have been lost or are in poor condition.
Create	Actions that create new features or areas where existing elements are lost or are in poor condition

5.67 The findings of the Landscape Character Assessments of each Landscape Policy Zone help to inform the work of the LDF, shaping future strategies and in the determination of Planning Applications, The Assessment was adopted in 2013 and is now a supplementary Planning Document of the LDF. It is intended that the Landscape Assessment will be updated and a new SPD will be produced.

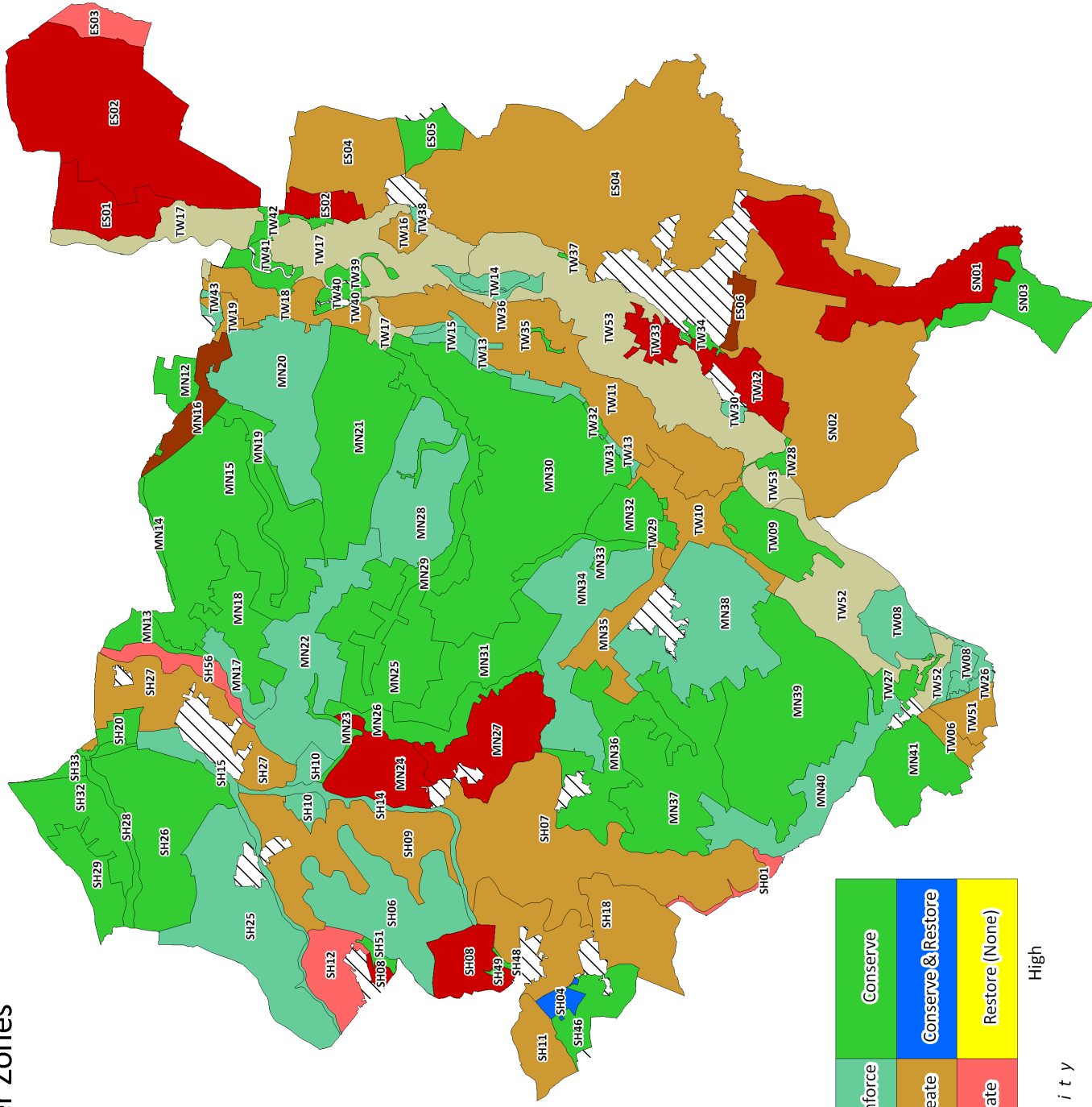
### **Core Policy 13**

#### **Landscape Character**

Based on the comprehensive assessment of the District's landscape character, provided by the Landscape Character Assessment Supplementary Planning Document, the District Council will work with partners and developers to secure:

- New development which positively addresses the implications of relevant landscape Policy Zone(s) that is consistent with the landscape conservation and enhancement aims for the area(s) ensuring that landscapes, including valued landscapes, have been protected and enhanced.

Figure 4 - Landscape Character Zones



Condition	Good	Conserve & Reinforce	Conserve
	Moderate	Create & Reinforce	Conserve & Create
	Poor	Create	Restore & Create
Sensitivity	Low		
	Moderate		
	High		Restore (None)

This map is reproduced from the Ordnance Survey material with the permission of Ordnance Survey on behalf of the Controller of Her Majesty's Stationary Office © Crown Copyright. Unauthorised reproduction infringes Crown Copyright and may lead to prosecution or civil proceedings. Newark and Sherwood District Council. Licence 100022288, 2010.

Scale: 1:250,000